

# LUXURY CAMPS & JUNGLE LODGES

## LUXURY CAMPS

Customised quiet comforts, luxurious cossetting and efficient care mark the advent of the royal tented vacation experience, available at some of India's most attractive holiday destinations.

## JUNGLE LODGES

The magic and majesty of Indian jungles, so delightfully pictured in the riveting jungle tales of the likes of Jim Corbett, hunter turned conservationist, have found a huge fan following around the world. Be it the wilderness of Kerala's wild elephant-rich forest lands or the savannah grassland-punctuated tiger havens of Madhya Pradesh, the wildlife enthusiasts can be assured a truly jungle-experience in India. Offering easy access to these ancient forest lands with their dazzling range of wildlife are a slew of beautifully appointed forest lodges, hotels and eco-friendly resorts, which offer a range of services including tiger-spotting by jeep and elephant, birding tours and local community interactions.

## Aman-i-khas, Ranthambhore

An encampment of just 10 special tents, Aman-i-Khás rests on the edge of Rajasthan's Ranthambhore National Park. Primal fantasies, in tented splendour, are played out around the camp's faithfully rustic outdoor fireplace, surrounded by cushioned, stone-clad banquettes under the magnificence of nature's twinkling 'eye'.



## Mool Sagar, Outside Jaisalmer

This luxurious camp is set up in what was once a royal pleasure garden. Built by Maharawal Mool Raj II in 1780, it comprises a long defile of delicate stone pavilions linked by walled gardens filled with flowers and fountains. Its 18 luxurious tents, handmade by traditional craftsmen, are set up on either side of the gardens, while to one side is a superb pool and bathing pavilion.



## Chhatra Sagar, Nimaj

Situated just 2 hours from Jodhpur, this idyllic haven comprises 11 tents pitched on a dam, overlooking a lake teeming with birds. The tents are amongst the finest to be found in India. Each is pitched to ensure privacy and all face directly onto the lake. The food served here is some of the finest Rajasthani home cooking in the state.



## Manvar Desert Resort & Camp, Manvar

This tented camp is larger than most, 30 tents in all, arranged in a circle with a smaller circle of flattened earth in the centre that serves as a stage for nightly performances by local musicians, singers and dancers. Here again there is a communal dining tent, commensurately larger than that at Chhatra Sagar and with a fine view over the encampment and desert beyond.



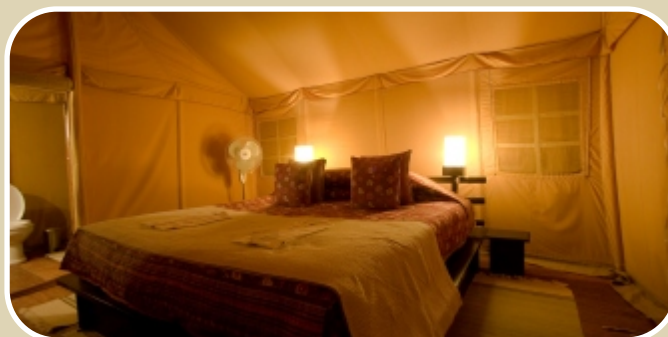
## Oberoi Vanyavilas - Ranthambhore NP

The accommodation may be tented but the luxury of Vanyavilas is as far-removed from camping as could be. The permanent rooms are draped with canvas giving the appearance of a tent but the interiors contain every comfort, including, air conditioning, four-poster beds and roll-top baths.



## Khem Villas - Ranthambhore NP

Situated on a 10 acre wilderness area just a 10-minute drive from the reserve, this delightful camp is surrounded by the natural world. This is one of the newest camps that started operating in October 2006. The six luxury cottages, five luxury tents and four double rooms are simply but well furnished and



## Sher Bagh - Ranthambhore NP

This genuine and well-established safari camp is perfect for those who want to spend their stay at Ranthambhore in comfort but in true jungle style. The dozen tents are pitched in private woodland on the park's outskirts, each with a modern attached bathroom and small veranda.



## Mahua Kothi - Bandhavgarh NP

The twelve village huts are newly built in the 40 acre grounds of the renowned tented camp formerly known as Churhat Kothi. The original Kothi (homestead) comprising the guest areas remains and has been extensively renovated, but the guest accommodation is all brand new. Each fan-cooled and air-conditioned room features traditional textiles in shades of rust and burnt orange and spacious en-suite bathrooms.



## Baghvan, Pench National Park

Revel in the solitude of your stand alone suite, with timber walls that blend into the wooded shadows of the jungle. Eclectic details like 1950s fridges, vintage toy trucks and carved wooden horses add a quirky touch. A covered walkway takes you to the generous bathroom, which offers a choice of conventional indoor and daring outdoor showers. For another al fresco experience, take the stairs to the open air machan on top of your suite.



## Banjaar Tola, Kanha NP (opening early 2009)

Taj Safaris' third jungle safari lodge will be situated along the banks of the Banjaar River, directly overlooking the heart of Kanha National Park. The Lodge will boast 2 elegant camps of 9 suites, each with its own intimate tented sitting area. The Lodge will have its own unique identity, celebrating the Bastar and Dogra art hailed from nearby Chattisgarh.

