

TAJ HOTELS, RESORTS & PALACES

From world-renowned landmarks to modern business hotels, and idyllic beach resorts to authentic Rajput palaces, each Taj hotel offers an unrivalled combination of warm Indian hospitality, contemporary, efficient service, and modern luxury

Taj Hotels Resorts and Palaces comprises 58 hotels in 39 locations across India gracing important industrial towns and cities, beautiful beaches, historical and pilgrim centres, and wildlife destinations. An innovator in dining, Taj was the first to introduce Sichuan, Thai, Italian, Mexican, and Californian cuisine into the country.

The Taj Mahal Hotel, New Delhi

One of the most distinguished addresses in the national capital, The Taj Mahal Hotel is located in the exclusive residential area of Lutyens' Delhi, close to the seat of government. Reflecting the heritage of Mughal Delhi, this hotel offers graceful architecture with modern facilities.



The Gateway Hotel, Agra, UP

Gracious interiors, personalized service and The Gateway Hotel's unique style are complemented by Agra's glittering monument to love, the Taj Mahal. Set amidst six acres of landscaped gardens, this tranquil retreat is an ideal spot for a business or leisure stay.



The Taj Palace Hotel, New Delhi

This hotel has played host to Heads of State, corporate moguls and high profile businessmen from across the world. Nestled in six acres of lush greens in the exclusive Diplomatic Enclave of the city, the hotel is a mere 10 minutes drive from the IGI Airport.



The Sawai Madhopur Lodge, Sawai Madhopur

Located amidst 12 acres of lush gardens, this 70-year-old hunting lodge exudes a rustic, earthy charm and an air of history. The lodge is 20-minutes drive from the Ranthambore National Park, famous for its tiger population.



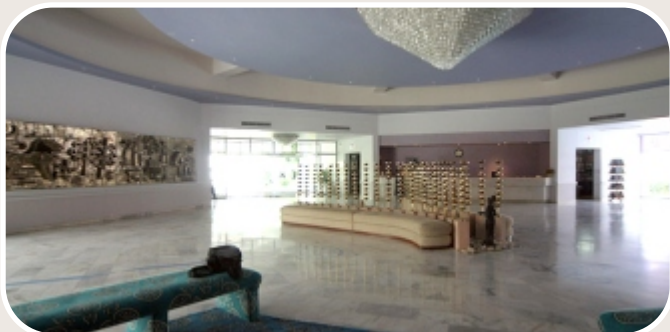
Taj Exotica, Goa

This Mediterranean-style resort is one of the best hotels in Goa. The tropical-inspired design touches, grand architecture, a sun-drenched atrium, wide shady corridors and flower lined patios have a way of slowing down time to a tranquil tempo. The hotel houses spacious deluxe and luxury rooms as well as two and four bedroom villas.



Hotel Chandela, Khajuraho

A haven of peace and tranquility, Hotel Chandela offers easy access to the world famous Khajuraho temples, Panna National Park Tiger Reserve, and more. Tucked snugly amidst 11 acres of beautifully landscaped gardens, this hotel offers an array of modern comforts.



The Gateway Hotel, Rawalkot, Jaisalmer

Overlooking the town of Jaisalmer, Hotel Rawal-Kot is the perfect combination of modern comfort and fairytale medieval charm. Perched above the town and seemingly rising out of the rocks, the hotel offers postcard-perfect views of the 12th century Jaisalmer Fort as well as the setting sun.



Mahua Kothi, Bandhavgarh National Park

Nestled in the vicinity of the breathtaking Bandhavgarh National Park is the first of the Taj Safaris Lodges. The lodge sprawls over the 40 acre grounds, around the renowned erstwhile tented camp, Churhat Kothi, the accommodation and facilities of the lodge blend charmingly into the quaint and rustic surroundings.



The Gateway Hotel, Varanasi

Taj Ganges is a veritable haven of peace and calm in the heart of this crowded, ancient temple city. Nearby, guests will find much to see and do including visiting the Buddhist pilgrimage centre and the famous temples at Varanasi.



Taj Residency, Aurangabad

This palace-styled hotel set amidst five acres of landscaped gardens offers spacious comfort and rich warm, hospitable service. Conveniently located, Taj Residency is a gateway to the World Heritage Sites of Ellora and Ajanta Caves and just 9kms from the airport and railway station.



Taj Banjara, Hyderabad

Situated in Banjara Hills, overlooking its own private lake, this hotel offers tranquil relaxation, spacious comfort and excellent amenities. The hotel is just a 10-minute drive from the bustling business and shopping districts.



Taj Garden Retreat, Kumarakom

Azure backwaters, swaying palms, and floating houseboats as a backdrop, Taj Garden Retreat is often referred to as the little jewel of Kumarakom. The 123-year-old colonial bungalow houses newly built Luxury Villas, heritage rooms and charming cottages. At this idyllic retreat, guests can look forward to practicing the art of doing nothing.



Taj Residency, Bangalore

Taj Residency is located in the heart of Bangalore, with a view of the city and the Ulsoor lake. The hotel is a one hour drive from the international and domestic airports. This hotel offers the perfect combination of uncompromising hospitality and amenities.



Taj Green Cove Resort, Kovalam

Located on one of India's most popular beaches, Kovalam, the property is spread across 10 acres of land, offering a breathtaking view of the backwater, lush landscapes, coconut palms, and unspoiled beaches. With its exotic tropical beauty and relaxing hospitality, this getaway is the perfect place to enjoy total relaxation.



Taj Malabar, Kochi

Situated on Willingdon Island with a magnificent view of Cochin harbour, the Taj Malabar combines old-world elegance with modern day convenience. In its heritage wing, built in 1935, graceful Victorian interiors aptly reflect the inherent beauty of Kochi (Cochin).



Taj Connemara, Chennai

Colonially elegant and infused with design touches hinting to its imperial past, the Taj Connemara, is Chennai's only heritage hotel. Modern comforts, thoughtful service, soothing views and complete privacy help make your stay comfortable and memorable.



Fisherman's Cove, Chennai

Once an impressive Dutch Fort, it is now one of the finest beach resorts in Southern India with 88 luxury cottages and comfortably appointed rooms. Bask in the warm glow of our friendly service and spacious rooms with views of the white sand beach, lapped by the waters of the Bay of Bengal.



Rambagh Palace, Jaipur

Spread over 47 acres of tranquil, landscaped gardens, Rambagh Palace is Jaipur's foremost Royal Palace residence. Located close to the walled 'Pink City', spectacular forts, and all the unique shopping bazaars of Jaipur, the Palace unveils the rich culture and history of the erstwhile rulers of Rajasthan.



The Taj Mahal Palace & Towers, Mumbai

Built in 1903, the hotel is an architectural marvel and brings together Moorish, Oriental, and Florentine styles. Offering panoramic views of the Arabian Sea and the Gateway of India, the hotel is a gracious landmark of the city of Mumbai, showcasing contemporary Indian influences.



Umaid Bhawan Palace, Jodhpur

Umaid Bhawan Palace is the last of the great palaces of India and one of the largest residences in the world – set amidst 26 acres of lush gardens. This golden-yellow sandstone monument was conceived on the grandest possible scale, in the fashionable Art Deco style of that time.



Jai Mahal Palace, Jaipur

Set amidst 18 acres of beautifully landscaped Moghul gardens, this incomparable Palace is a masterpiece in the Indo Saracenic style of architecture. It blends spotlight-grabbing opulence with tantalizing comforts that transport guests to a world of Rajasthan magnificence.



Taj Lake Palace, Udaipur

This exquisite white marble palace seems to float majestically on the still waters of Lake Pichola. Set amid awe-inspiring fairytale gardens, this 250-year old palace may be the most romantic hotel in the world. The palace brims with princely details including marble pillars, ornate glasswork, intricate paintings, and much more.



Taj Fort Aguada Beach Resort, Goa

Built on the ramparts of a 16th century Portuguese fortress, and situated close to the beach, Fort Aguada Beach Resort offers a range of spacious villas and cottages. With its exotic tropical beauty, pristine beaches, nine restaurants, Taj Spa, and vibrant local culture, there are many opportunities for fun and relaxation.



Rambagh Palace, Jaipur

Spread over 47 acres of tranquil, landscaped gardens, Rambagh Palace is Jaipur's foremost Royal Palace residence. Located close to the walled 'Pink City', spectacular forts, and all the unique shopping bazaars of Jaipur, the Palace unveils the rich culture and history of the erstwhile rulers of Rajasthan.



Taj Hari Mahal, Jodhpur

Spread over six acres of lush, landscaped gardens, this 21st century palace offers luxurious refinement. Skillfully designed, weaving traditional glory with modern day refinements, its Marwar style architecture and Moghul-inspired domes, enamelled murals, slender columns, and grand interiors have a unique beauty, which transform this palace into a romantic haven.



Umaid Bhawan Palace, Jodhpur

Umaid Bhawan Palace is the last of the great palaces of India and one of the largest residences in the world – set amidst 26 acres of lush gardens. This golden-yellow sandstone monument was conceived on the grandest possible scale, in the fashionable Art Deco style of that time.



Taj Garden Retreat, Madurai

The Taj Garden Retreat enthralls guests with its charming mix of old and new. Perched atop Pasumalai hill, and offering panoramic views of the temple city of Madurai and the Kodai hills, the hotel can accommodate up to 225 for meetings or 500 for receptions.



Taj Lake Palace, Udaipur

This exquisite white marble palace seems to float majestically on the still waters of Lake Pichola. Set amid awe-inspiring fairytale gardens, this 250-year old palace may be the most romantic hotel in the world. The palace brims with princely details including marble pillars, ornate glasswork, intricate paintings, and much more.

